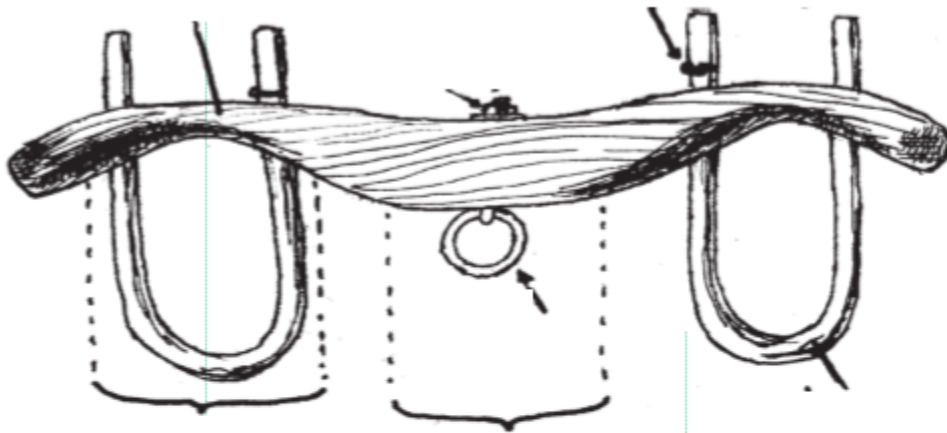




Working Steer Activity Sheet

Page 1



Can you identify the parts of the yoke(7)?

Use the word bank below!

Yoke

Staple

Belly

Bow

Neck

Ring

Pin or Key

Created by Wendy Sorrell, May 2020

Image from NH 4-H Working Steer Manual

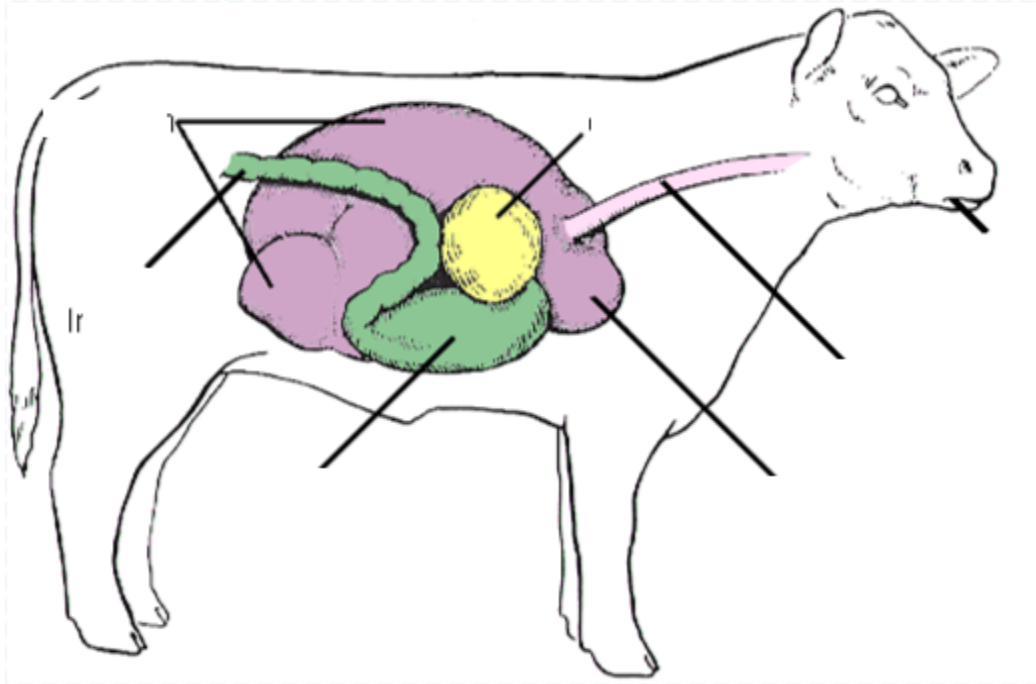


Working Steer Activity Sheet

Page 2



Parts of the Digestive Tract



Using this word bank, identify the parts of the Digestive tract:

Reticulum

Esophagus

Rumen

Omasum

Abomasum

Mouth

Small Intestine

Created by Wendy Sorrell, May 2020



Working Steer Activity Sheet

Page 3



What are the five Major Nutrients?

Fill in the missing letters!

___N___R___Y

P___T___

___A___E___

___I___A___I___

M___R___S

Cattle feeds are typically divided into two types: roughages and concentrates. Roughages include hay, silage, straw, pasture, corn stalks and other crop residue. Roughages are high in fiber and typically lower in energy than concentrates. Concentrates include grains (corn, oats, etc.) and the by-products from processing other foods like wheat bran, distillers waste, etc. These feeds are high in energy and sometimes high in protein (soybean meal, cottonseed meal). Concentrates tend to be higher priced feeds than roughages.

From Page 8 of the NH 4-H Working Steer Manual

Created by Wendy Sorrell, May 2020



Working Steer Activity Sheet

Page 4



About your Team!

What kind of wood is your yoke/bows made out of? _____

What do you feed your team? _____

What breed is your team? _____

Where does the breed (s) originate from? _____

How much does your team weigh? _____

What is the expected mature weight of your team? _____

How old is your team? _____

It is your responsibility to monitor the growth rates of your team. Make sure each steer gets adequate amounts of grain and hay. Separate your team at feeding if one steer is more aggressive in eating all the feed. If the horns on your cattle grow in different directions, you may correct them. *From the NH 4-H Working Steer Manual*



Created by Wendy Sorrell, May 2020

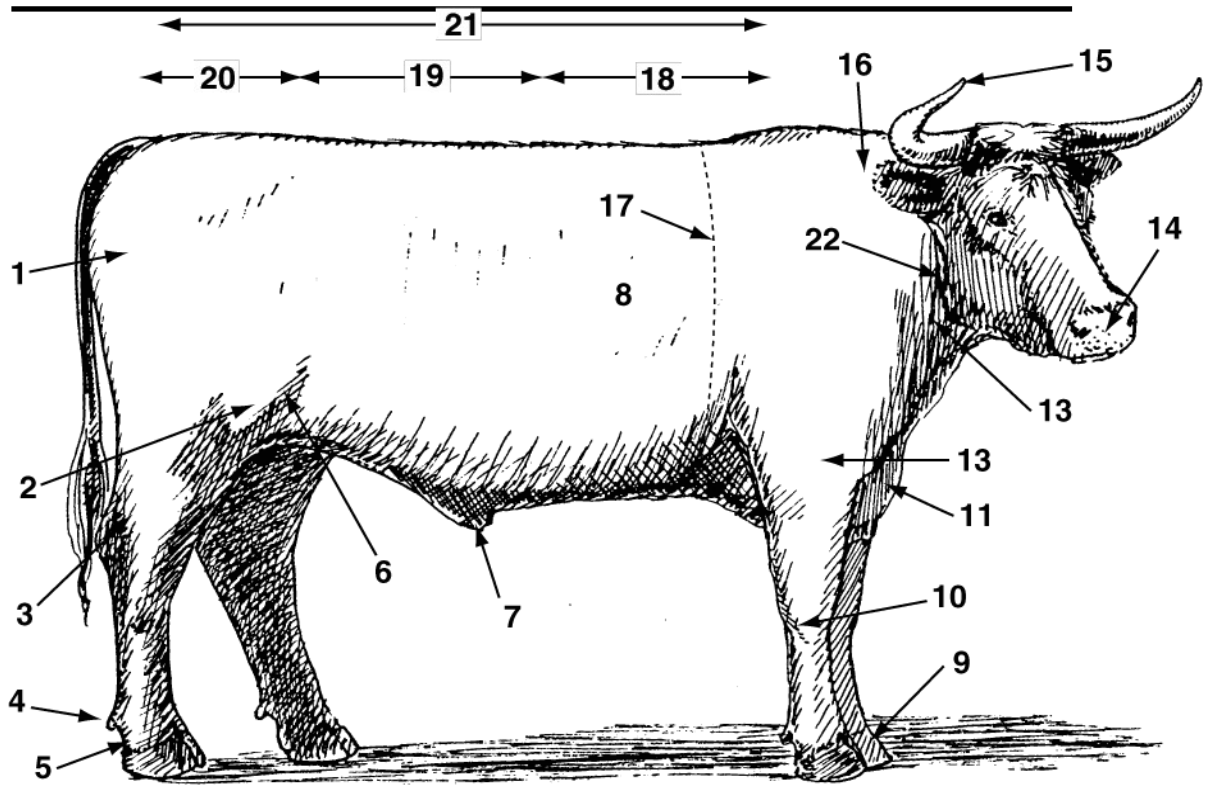


Working Steer Activity Sheet

Page 5

From NH 4-H Working Steer Manual

Parts of a Steer



- | | | |
|----|-----|-----|
| 1. | 9. | 17. |
| 2. | 10. | 18. |
| 3. | 11. | 19. |
| 4. | 12. | 20. |
| 5. | 13. | 21. |
| 6. | 14. | 22. |
| 7. | 15. | |
| 8. | 16. | |

Created by Wendy Sorrell, May 2020



Working Steer Activity Sheet Page 6



4-H Working steer

C	N	X	I	H	R	G	C	G	M	G	N	I	S
L	Y	V	A	O	I	S	E	O	E	N	I	I	S
E	O	E	N	O	B	K	R	A	I	I	S	E	A
A	K	L	I	V	G	O	S	N	R	H	M	U	L
N	E	P	A	E	N	S	W	E	O	C	A	N	C
L	R	E	H	S	M	I	T	S	R	T	H	I	T
I	H	E	C	A	N	S	G	S	G	I	R	F	R
N	O	T	H	O	M	R	A	H	O	H	U	O	A
E	R	S	O	A	S	V	N	E	X	O	D	R	C
S	N	E	E	I	W	O	D	H	P	S	I	M	G
S	S	T	C	L	I	P	P	I	N	G	E	I	N
C	E	T	N	E	M	P	I	U	Q	E	E	T	I
G	O	O	N	O	I	T	I	D	N	O	C	Y	R
T	U	M	A	T	C	H	E	D	P	A	I	R	O

CART CLASS
TEAMSTER
CLIPPING
UNIFORMITY
STEEPLE
HITCHING
HORNS
BOWS
CLEANLINESS
DURHAMS
HOOVES
CONDITION
MATCHED PAIR
CHAIN
HAW
NIGH
EQUIPMENT
YOKE
OXEN
RING

Created by Melinda Birch, May 2020

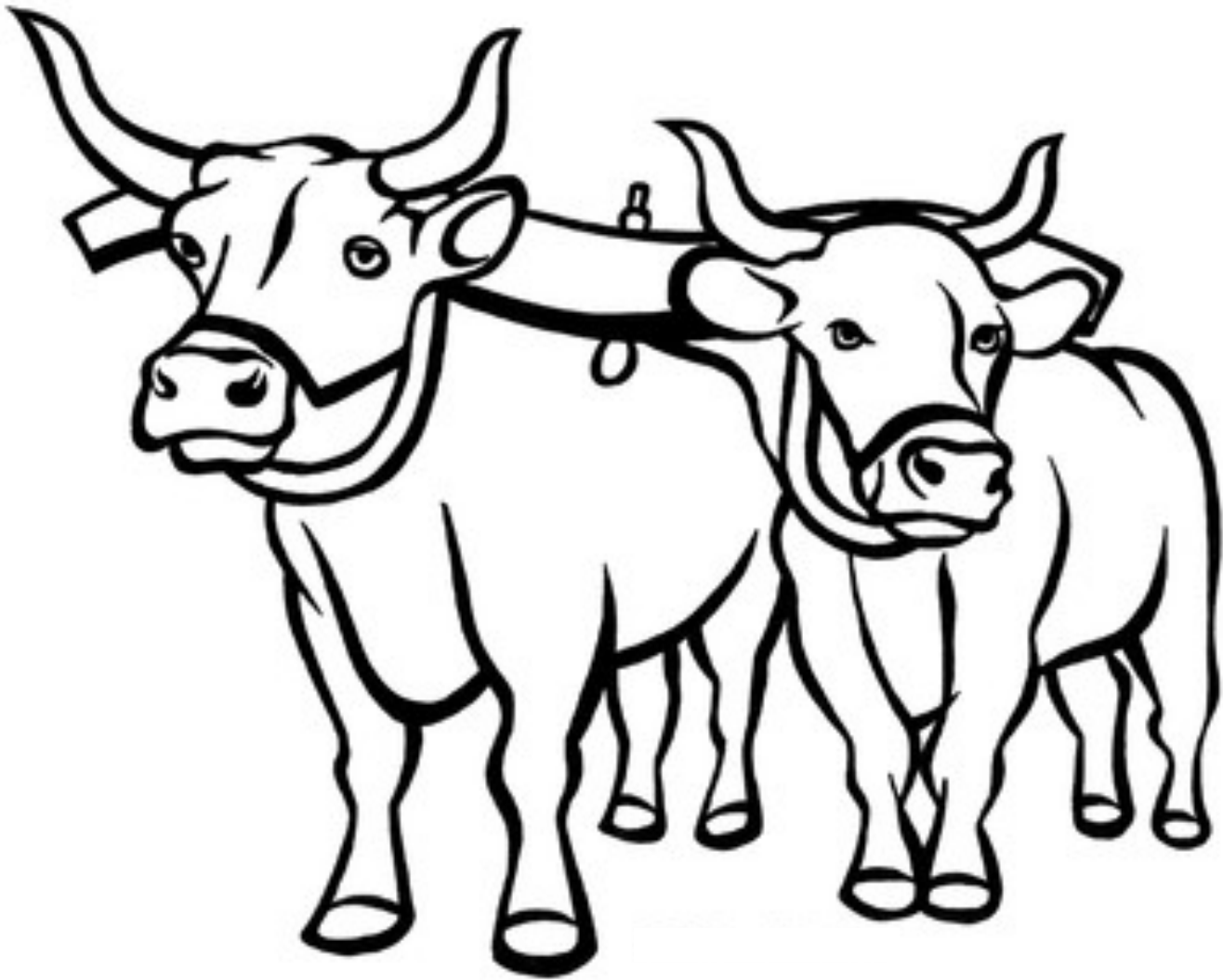


Working Steer Activity Sheet

Page 7



Color the Team!



Created by Wendy Sorrell, May 2020



Working Steer Activity Page 8



Created by Wendy Sorrell, May 2020



www.uvm.edu/extension/youth

Issued in furtherance of Cooperative Extension work, Acts of May 8 and June 30, 1914, in cooperation with the United States Department of Agriculture. University of Vermont Extension, Burlington, Vermont. University of Vermont Extension, and U.S. Department of Agriculture, cooperating, offer education and employment to everyone without regard to race, color, national origin, gender, religion, age, disability, political beliefs, sexual orientation, and marital or familial status. Any reference to commercial products, trade names, or brand names is for information only, and no endorsement or approval is intended.